

SINAB

# PHOENIX

## POD



### SELF-CONTAINED AIRBORNE MISSION SYSTEM

Delivered on aircraft already in service.  
No aircraft modification required.

- + ISR
- + Targeting
- + JTAC Training
- + Counter-UAS
- + Tactical Communications

The Phoenix Mission System is delivered through the Phoenix Pod, mounted on a standard aircraft pylon.



Two pod sizes are available:  
**Phoenix 10** + **Phoenix 5**

# AIRBORNE MISSION CAPABILITY WITHOUT AIRCRAFT MODIFICATION

Most airborne mission systems require aircraft modification, avionics integration and platform-specific certification.

## Phoenix takes a different approach.

The Phoenix Mission System is delivered entirely within an external pod mounted on a standard aircraft pylon. Sensors, processing, power generation and communications systems are contained within the pod.

The aircraft carries the system. It does not need to be modified to support it.

This allows operators to add ISR, targeting, communications or training capability to aircraft already in service without changing the airframe, avionics or wiring.

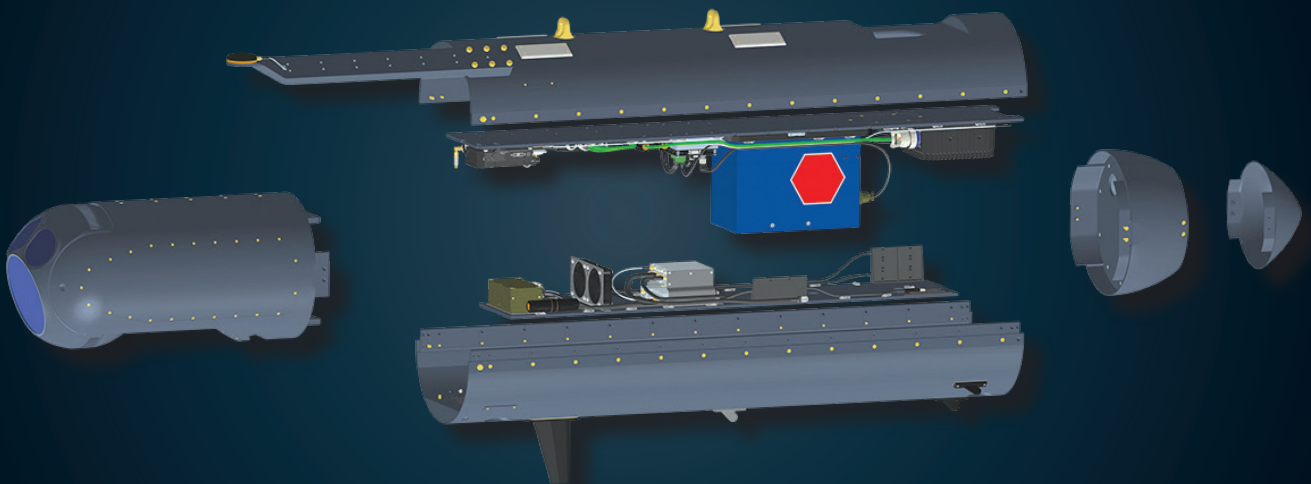
## Key Characteristics

- + Fully self-contained mission system
- + No aircraft wiring or avionics modification
- + No permanent installation
- + Mounted on standard 14" NATO pylons
- + Deployable across multiple aircraft types
- + One system approved once and flown across multiple platforms

---

**MISSION CAPABILITY IS DELIVERED AT THE PYLON,  
NOT BUILT INTO THE AIRCRAFT.**

---



## DEFENCE MISSION APPLICATIONS

- + **ISR & Targeting**  
Long-range EO/IR sensing, tracking and coordinate generation in operational environments.
- + **Counter-UAS**  
Airborne detection, tracking and cueing of unmanned threats.
- + **JTAC / JFO Training**  
Full DACAS workflows including laser designation and replay, delivered without modifying training aircraft.
- + **Targeting & Laser Effects**  
Laser designation, pointer and range-finding for training and operational scenarios.
- + **Airborne Communications & Data Relay**  
Tactical relay and gateway roles supporting BACN-type concepts, MUM-T and rebroadcast.

## GOVERNMENT & CIVIL APPLICATIONS

The same capability supports:

- + Search and Rescue
- + Disaster response and crisis mapping
- + Border and coastal surveillance
- + Bushfire mapping and hotspot detection
- + Environmental monitoring and infrastructure patrol



### LONG-RANGE, HIGH DEFINITION IMAGING



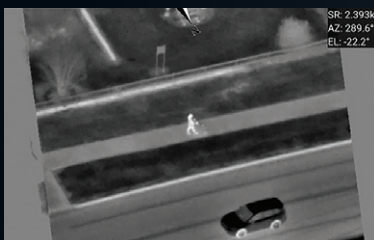
10km slant range



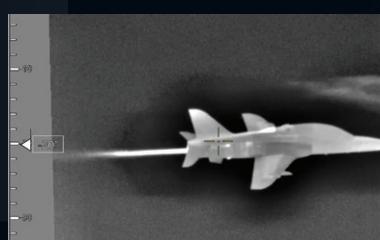
16km slant range



20km slant range



SR: 2.393km  
AZ: 289.6°  
EL: -22.2°



MWIR imaging



SR: 4.906  
AZ: 284.4  
EL: -28.4°

SWIR imaging

# ONE MISSION SYSTEM. MULTIPLE AIRCRAFT.

The Phoenix Mission System integrates sensing, mission processing, communications and operator control into a single deployable capability.

The system consists of three elements:

## Phoenix Pod

The airborne system containing sensors, mission processing, communications and power generation.

## Phoenix Cockpit Interface

A tablet-based interface used by the aircrew to control sensors, targeting functions and mission workflows.

## Phoenix Ground Station

A monitoring and control interface used by instructors, mission commanders or operations staff. Together they deliver a complete airborne mission capability without aircraft downtime or modification.

## HOW THE SYSTEM WORKS

### Phoenix Pod

The pod carries all airborne mission systems including:

- + EO / MWIR / SWIR sensors
- + 4-axis stabilised gimbal
- + Optional laser pointer and laser designator
- + Mission processing and onboard recording
- + Embedded video processing including stabilisation, target tracking, VMTI and ATR
- + Navigation, power management and health monitoring
- + Secure and open communications systems

### Phoenix Cockpit

Tablet-based operator interface providing:

- + Sensor and laser control
- + DACAS and targeting workflows
- + Mapping, symbology and annotation
- + Mission recording and replay

### Phoenix Ground Station

Provides:

- + Live mission monitoring
- + JTAC instructor oversight
- + Multi-link video reception
- + Replay and debrief capability
- + Live-Virtual-Constructive integration



*Together, they deliver mission effects without aircraft downtime.*

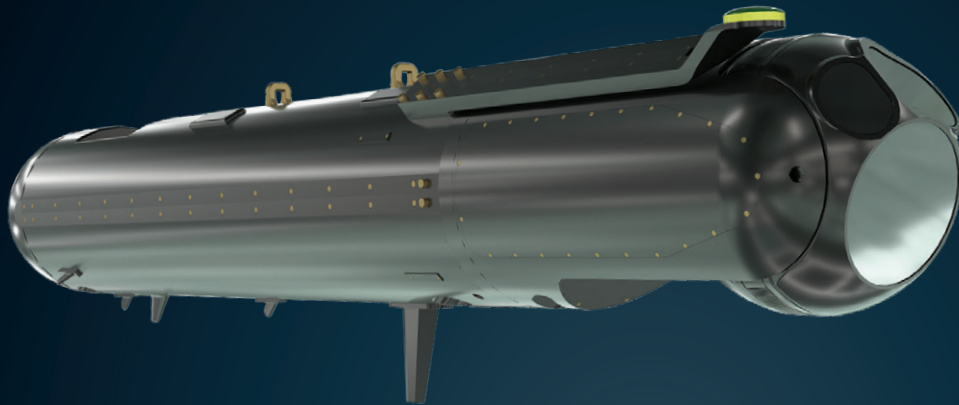


# PHOENIX POD CONFIGURATIONS

The Phoenix Pod is available in two sizes to suit different aircraft classes and mission profiles.

## Phoenix 10

Full-size pod providing maximum sensing range, payload capacity and endurance.



## Phoenix 5

Compact pod designed for lighter aircraft, helicopters and emerging special-mission platforms.



## SHARED SYSTEM CAPABILITY

Both pods share the same mission system, operator interface and communications architecture. Operators can deploy the same mission system across different aircraft types while maintaining common training and operating procedures.

### Both pod sizes include:

- + MIL-SPEC mission computer
- + Independent onboard power generation
- + 14" NATO pylon interface
- + Wireless cockpit interface
- + Combat Net Radio (voice and data)
- + Rover-compatible video
- + Link-16 integration
- + Persistent Systems Wave Relay MANET
- + Persistent Systems Cloud Relay

# PHYSICAL AND SENSOR CHARACTERISTICS

	Phoenix 10	Phoenix 5
<b>Length</b>	2238 mm / 88.1"	1534 mm / 60.4
<b>Diameter</b>	322.6mm / 12.7"	197 mm / 7.8"
<b>Weight</b>	104 kg / 234 lb	Max 23 kg / 50 lb
<b>Structure</b>	Anodised aluminium alloy	Carbon fibre composite
<b>EO/IR Sensor</b>	Alticam 14	Alticam 06EOIR3
<b>Stabilisation</b>	4-axis	4-axis
<b>Video Feeds</b>	3 simultaneous H.264	2 simultaneous H.264 / H.265
<b>Laser Pointer</b>	Class 3B - 150 mW	Class 3B - 150 mW
<b>Laser Designator</b>	Class 4 - 50 mJ / pulse	Class 4 - 30 mJ / pulse



## PROVEN. APPROVED. IN SERVICE.

Phoenix 10 is flight-tested, operationally mature and ready for export.

Phoenix Pod has flown on platforms including:

- + Hawk
- + PC-9A
- + Learjet 35/36
- + L-39 Skyfox
- + L39 ZA
- + L-159 ALCA
- + Cessna O-2A

Approvals include:

- + USAF Military Flight Release
- + FAA, EASA and CASA authorisations

The Phoenix Pod is protected by multiple international patent filings covering its self-contained mission system.

## DEPLOYABLE ACROSS MULTIPLE AIRCRAFT

Phoenix Pods have flown on aircraft ranging from turboprop trainers to high-performance jets.

Because Phoenix is a self-contained system mounted on a standard aircraft pylon, the same mission capability can be deployed across different aircraft types without modifying the airframe.

This allows operators to add ISR, targeting, communications or training capability to aircraft already in service.

Aircraft can be configured for mission roles without long integration programs or extended aircraft downtime.



# SiNAB

## ENGINEERING THE **FUTURE** OF AEROSPACE & DEFENCE

*SiNAB designs and delivers advanced aerospace and defence systems to meet real-world operational challenges.*



### GLOBAL PARTNER NETWORK

Phoenix Pod systems are represented internationally across:  
North America • Middle East • Asia • Eastern Europe

These partnerships support demonstrations, integration pathways and in-country engagement as Phoenix continues its expansion into global markets.

[sinab.com](http://sinab.com)

PHOENIX